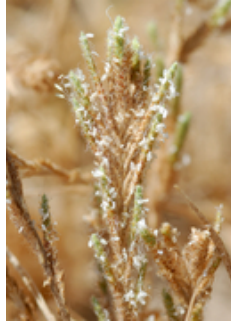


Report for *Orcuttia pilosa*

TAXON DETAILS



© 2003 George W. Hartwell



© 2011 Chris Winchell



© 2010 Chris Winchell

Classification

Scientific Name	<i>Orcuttia pilosa</i> Hoov.
Common Name	hairy Orcutt grass
Family	Poaceae
Element Code	PMPOA4G040
USDA Plants Symbol	<u>ORPI</u>
Synonyms/Other Names	

Conservation Status

California Rare Plant Rank	1B.1
Global Rank	G1
State Rank	S1
CESA	CE (09/01/79)
FESA	03/26/97 (03/26/97)
Other Status	SB_CaIBG/RSABG
CRPR Changes	
Date Added	1980-01-01
Last Update	2021-05-26

Ecology and Life History

Lifeform	annual herb
Blooming Period	May-Sep
Elevation m (ft)	46-200 (150-655)
General Habitats	Vernal pools
Microhabitat Details	
Microhabitat	

Threat List Data from the CNDDDB

Threat List Total:		11
	Total EOs	Percent EOs
EOs with Threats Listed	31	86%
Threat List:		
Agriculture	18	50%
Grazing	17	47%
Non-native plant impacts	9	25%
Disking	8	22%
Development	5	13%
Altered flood/tidal/hydrologic regime	4	11%
Foot traffic/trampling	3	8%
Road/trail construction/maint.	2	5%
Erosion/runoff	1	2%
ORV activity	1	2%
Other	1	2%

Element Occurrence Data from the CNDDDB

Total Element Occurrences:	36
Element Occurrence Ranks:	
Excellent (A)	3
Good (B)	9
Fair (C)	4
Poor (D)	3
None (X)	15
Unknown (U)	2
Occurrence Status	
Historical, > 20 years	23
Recent, < 20 years	13
Presence	
Presumed Extant	21
Possibly Extirpated	7
Presumed Extirpated	8

Location

California Endemic	Yes
Counties	
Glenn (GLE), Madera (MAD), Merced (MER), Stanislaus (STA), Tehama (TEH)	
States	
California (CA)	
Quads	

Cooperstown (3712065)*, Daulton (3711918), Gregg (3611988), Herndon (3611978), Kismet (3712011)*, Lanes Bridge (3611987), Logandale (3912242), Madera (3612081), Merced (3712034), Montpelier (3712056), Paulsell (3712066)*, Richardson Springs NW (3912188), Turlock Lake (3712055), Vina (3912281), Yosemite Lake (3712044)*

Notes

Definitions of codes preceding a county and/or quad:

* Presumed extirpated

(*) Possibly extirpated

Species may be present in other areas where conditions are favorable. These data should NOT be substituted for pre-project review or for on-site surveys.

Notes

Seriously threatened by agriculture, urbanization, overgrazing, non-native plants, and trampling. See *Bulletin of the Torrey Botanical Club* 68:155 (1941) for original description, and *American Journal of Botany* 69:1082-1095 (1982) for taxonomic treatment.

Threats

Taxononmy

Selected References

Suggested Citation

California Native Plant Society, Rare Plant Program. 2024. Rare Plant Inventory (online edition, v9.5). Website <https://www.rareplants.cnps.org> [accessed 15 May 2024].