

## Report for *Calicium adpersum*

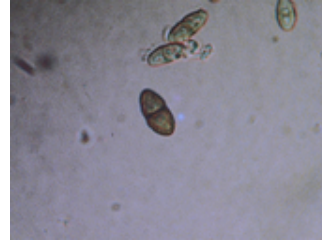
### TAXON DETAILS



© 2014 Eric B. Peterson



©2021 Scot Loring



© 2021 Scot Loring

### Classification

<b>Scientific Name</b>	<i>Calicium adpersum</i> Pers.
<b>Common Name</b>	spiral-spored gilded-head pin lichen
<b>Family</b>	Caliciaceae
<b>Element Code</b>	NLT0005640
<b>USDA Plants Symbol</b>	<u>CAAD4</u>
<b>Synonyms/Other Names</b>	

### Conservation Status

<b>California Rare Plant Rank</b>	2B.2
<b>Global Rank</b>	G3G4
<b>State Rank</b>	S1
<b>CESA</b>	None
<b>FESA</b>	None
<b>Other Status</b>	USFS_S
<b>CRPR Changes</b>	added to 2B.2 on 2014-03-01
<b>Date Added</b>	2014-03-01
<b>Last Update</b>	2023-06-06

### Ecology and Life History

<b>Lifeform</b>	crustose lichen (epiphytic)
<b>Blooming Period</b>	
<b>Elevation m (ft)</b>	200-200 (655-655)
<b>General Habitats</b>	Lower montane coniferous forest, North Coast coniferous forest
<b>Microhabitat Details</b>	Often restricted to old-growth bark of conifers that are over 200 years in age
<b>Microhabitat</b>	

## Threat List Data from the CNDDDB

<b>Threat List Total:</b>		2
	<b>Total EOs</b>	<b>Percent EOs</b>
<b>EOs with Threats Listed</b>	<b>1</b>	<b>100%</b>
<b>Threat List:</b>		
Improper burning regime	1	100%
Logging	1	100%

## Element Occurrence Data from the CNDDDB

<b>Total Element Occurrences:</b>	1
<b>Element Occurrence Ranks:</b>	
Excellent (A)	0
Good (B)	0
Fair (C)	0
Poor (D)	0
None (X)	0
Unknown (U)	1
<b>Occurrence Status</b>	
Historical, > 20 years	1
Recent, < 20 years	0
<b>Presence</b>	
Presumed Extant	1
Possibly Extirpated	0
Presumed Extirpated	0

## Location

<b>California Endemic</b>	No
---------------------------	----

<b>Counties</b>
Del Norte (DNT)

<b>States</b>
California (CA), Oregon (OR), Washington (WA)

<b>Quads</b>
Crescent City (4112472), Hiouchi (4112471), Sister Rocks (4112462)

### **Notes**

Definitions of codes preceding a county and/or quad:

\* Presumed extirpated

(\*) Possibly extirpated

Species may be present in other areas where conditions are favorable. These data should NOT be substituted for pre-project review or for on-site surveys.

## Notes

Known in CA only from Jedediah Smith Redwoods SP. Host conifers could include *Abies grandis*, *Pseudotsuga menziesii*, *Sequoia sempervirens*, and *Thuja plicata*.

### **Threats**

\_\_\_\_ Possibly threatened by alteration of fire regimes.

### **Taxononmy**

\_\_\_\_ Possibly threatened by alteration of fire regimes.

### **Selected References**

**Species Account:** *Calicium adspersum* profile for potential Species of Conservation Concern evaluation (2018)

**Other:** *Bulletin of the California Lichen Society* 13(2):51-54 (2006) for CALS Conservation Committee sponsorship

### **Suggested Citation**

California Native Plant Society, Rare Plant Program. 2024. Rare Plant Inventory (online edition, v9.5). Website <https://www.rareplants.cnps.org> [accessed 15 May 2024].