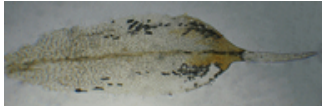
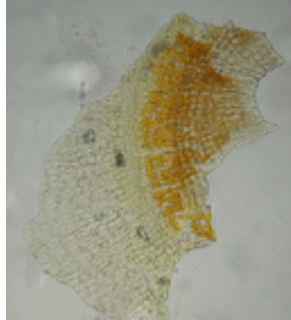


## Report for *Grimmia torenii*

### TAXON DETAILS



©2021 Scot Loring



© 2021 Scot Loring



© 2021 Scot Loring

### Classification

Scientific Name	<i>Grimmia torenii</i> Hastings
Common Name	Toren's grimmia
Family	Grimmiaceae
Element Code	NBMUS32330
USDA Plants Symbol	
Synonyms/Other Names	

### Conservation Status

California Rare Plant Rank	1B.3
Global Rank	G2
State Rank	S2
CESA	None
FESA	None
Other Status	BLM_S
CRPR Changes	added to 1B.3 on 2014-05-14
Date Added	2014-05-14
Last Update	2022-03-01

### Ecology and Life History

Lifeform	moss
Blooming Period	
Elevation m (ft)	325-1160 (1065-3805)
General Habitats	Chaparral, Cismontane woodland, Lower montane coniferous forest
Microhabitat Details	boulder and rock walls
Microhabitat	Carbonate, Openings, Rocky, Volcanic

## Threat List Data from the CNDDDB

Threat List Total:		0
	Total EOs	Percent EOs
EOs with Threats Listed	0	%
Threat List:		

## Element Occurrence Data from the CNDDDB

Total Element Occurrences:	13
Element Occurrence Ranks:	
Excellent (A)	0
Good (B)	0
Fair (C)	0
Poor (D)	0
None (X)	0
Unknown (U)	13
Occurrence Status	
Historical, > 20 years	4
Recent, < 20 years	9
Presence	
Presumed Extant	13
Possibly Extirpated	0
Presumed Extirpated	0

## Location

California Endemic	Yes
--------------------	-----

### Counties

Contra Costa (CCA), Lake (LAK), Mendocino (MEN), Monterey (MNT), San Mateo (SMT), Santa Cruz (SCR)

### States

California (CA)

### Quads

Big Basin (3712222), Clayton (3712188), Cow Mountain (3912321), Elk Mountain (3912238), Elledge Peak (3912312), Jericho Valley (3812274), Lake Pillsbury (3912248), Partington Ridge (3612126), Upper Lake (3912228), Whispering Pines (3812276)

### **Notes**

Definitions of codes preceding a county and/or quad:

\* Presumed extirpated

(\*) Possibly extirpated

Species may be present in other areas where conditions are favorable. These data should NOT be substituted for pre-project review or for on-site surveys.

## Notes

## Threats

## Taxononmy

## Selected References

**CNPS Status Review:** Proposed addition to California Rare Plant Rank 1B.3, G2 / S2

**Original Description:** *The Bryologist* 111(3):463-475 (2008)

**Species Account:** *Grimmia torenii* profile for potential Species of Conservation Concern evaluation (2018)

**Other:** USFS Potential Species of Conservation Concern Profile

## Suggested Citation

California Native Plant Society, Rare Plant Program. 2024. Rare Plant Inventory (online edition, v9.5). Website <https://www.rareplants.cnps.org> [accessed 19 May 2024].