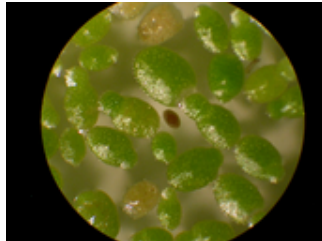


## Report for *Wolffia brasiliensis*

### TAXON DETAILS



© 2021 Scot Loring



2014 Jeff Greenhouse



© 2019 Evan D. MacKinnon

### Classification

Scientific Name	<i>Wolffia brasiliensis</i> Wedd.
Common Name	Brazilian watermeal
Family	Araceae
Element Code	PMLEM03020
USDA Plants Symbol	<u>WOBR</u>
Synonyms/Other Names	

### Conservation Status

California Rare Plant Rank	2B.3
Global Rank	G5
State Rank	S2
CESA	None
FESA	None
Other Status	
CRPR Changes	changed from 2.3 to 2B.3 on 2013-06-12
Date Added	2001-01-01
Last Update	2021-07-14

### Ecology and Life History

Lifeform	perennial herb (aquatic)
Blooming Period	Apr-Dec
Elevation m (ft)	20-100 (65-330)
General Habitats	Marshes and swamps (shallow freshwater)
Microhabitat Details	
Microhabitat	

## Threat List Data from the CNDDDB

<b>Threat List Total:</b>		2
	<b>Total EOs</b>	<b>Percent EOs</b>
<b>EOs with Threats Listed</b>	<b>2</b>	<b>33%</b>
<b>Threat List:</b>		
Altered flood/tidal/hydrologic regime	1	16%
Waterway bank protection/maintenance	1	16%

## Element Occurrence Data from the CNDDDB

<b>Total Element Occurrences:</b>	6
<b>Element Occurrence Ranks:</b>	
Excellent (A)	0
Good (B)	1
Fair (C)	0
Poor (D)	0
None (X)	0
Unknown (U)	5
<b>Occurrence Status</b>	
Historical, > 20 years	4
Recent, < 20 years	2
<b>Presence</b>	
Presumed Extant	6
Possibly Extirpated	0
Presumed Extirpated	0

## Location

<b>California Endemic</b>	No
---------------------------	----

### **Counties**

Butte (BUT), Glenn (GLE), Sutter (SUT), Yuba (YUB)
--

### **States**

Alabama (AL), Arkansas (AR), California (CA), Connecticut (CT), Delaware (DE), District of Columbia (DC), Florida (FL), Georgia (GA), Illinois (IL), Indiana (IN), Iowa (IA), Kansas (KS), Kentucky (KY), Louisiana (LA), Maryland (MD), Massachusetts (MA), Michigan (MI), Minnesota (MN), Mississippi (MS), Missouri (MO), Montana (MT), Nebraska (NE), New Jersey (NJ), New York (NY), North Carolina (NC), Ohio (OH), Oklahoma (OK), Oregon (OR), Pennsylvania (PA), South Carolina (SC), Tennessee (TN), Texas (TX), Utah (UT), Vermont (VT), Virginia (VA), Washington (WA), West Virginia (WV), Wisconsin (WI)
---

### **Quads**

Camp Far West (3912113), Hamilton City (3912261), Llano Seco (3912158), Ord Ferry (3912168), Pennington (3912137)
---

### **Notes**

Definitions of codes preceding a county and/or quad:

\* Presumed extirpated

(\*) Possibly extirpated

Species may be present in other areas where conditions are favorable. These data should NOT be substituted for pre-project review or for on-site surveys.

## **Notes**

Potentially threatened by competition. See *Madroño* 36(4):283-286 (1989) for first CA occurrence.

## **Threats**

## **Taxononmy**

## **Selected References**

## **Suggested Citation**

California Native Plant Society, Rare Plant Program. 2024. Rare Plant Inventory (online edition, v9.5). Website <https://www.rareplants.cnps.org> [accessed 19 May 2024].