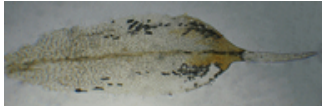
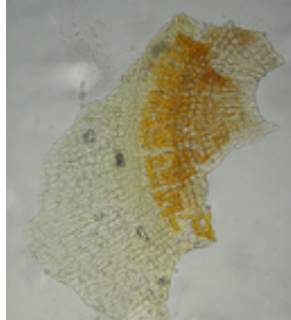


Report for *Grimmia torenii*

TAXON DETAILS



©2021 Scot Loring



© 2021 Scot Loring



© 2021 Scot Loring

Classification

Scientific Name	<i>Grimmia torenii</i> Hastings
Common Name	Toren's grimmia
Family	Grimmiaceae
Element Code	NBMUS32330
USDA Plants Symbol	
Synonyms/Other Names	

Conservation Status

California Rare Plant Rank	1B.3
Global Rank	G2
State Rank	S2
CESA	None
FESA	None
Other Status	BLM_S
CRPR Changes	added to 1B.3 on 2014-05-14
Date Added	2014-05-14
Last Update	2022-03-01

Ecology and Life History

Lifeform	moss
Blooming Period	
Elevation m (ft)	325-1160 (1065-3805)
General Habitats	Chaparral, Cismontane woodland, Lower montane coniferous forest
Microhabitat Details	boulder and rock walls
Microhabitat	Carbonate, Openings, Rocky, Volcanic

Threat List Data from the CNDDDB

Threat List Total:		0
	Total EOs	Percent EOs
EOs with Threats Listed	0	%
Threat List:		

Element Occurrence Data from the CNDDDB

Total Element Occurrences:	13
Element Occurrence Ranks:	
Excellent (A)	0
Good (B)	0
Fair (C)	0
Poor (D)	0
None (X)	0
Unknown (U)	13
Occurrence Status	
Historical, > 20 years	4
Recent, < 20 years	9
Presence	
Presumed Extant	13
Possibly Extirpated	0
Presumed Extirpated	0

Location

California Endemic	Yes
--------------------	-----

Counties

Contra Costa (CCA), Lake (LAK), Mendocino (MEN), Monterey (MNT), San Mateo (SMT), Santa Cruz (SCR)

States

California (CA)

Quads

Big Basin (3712222), Clayton (3712188), Cow Mountain (3912321), Elk Mountain (3912238), Elledge Peak (3912312), Jericho Valley (3812274), Lake Pillsbury (3912248), Partington Ridge (3612126), Upper Lake (3912228), Whispering Pines (3812276)

Notes

Definitions of codes preceding a county and/or quad:

* Presumed extirpated

(*) Possibly extirpated

Species may be present in other areas where conditions are favorable. These data should NOT be substituted for pre-project review or for on-site surveys.

Notes

Threats

Taxononmy

Selected References

CNPS Status Review: Proposed addition to California Rare Plant Rank 1B.3, G2 / S2

Original Description: *The Bryologist* 111(3):463-475 (2008)

Species Account: *Grimmia torenii* profile for potential Species of Conservation Concern evaluation (2018)

Other: USFS Potential Species of Conservation Concern Profile

Suggested Citation

California Native Plant Society, Rare Plant Program. 2024. Rare Plant Inventory (online edition, v9.5). Website <https://www.rareplants.cnps.org> [accessed 2 May 2024].