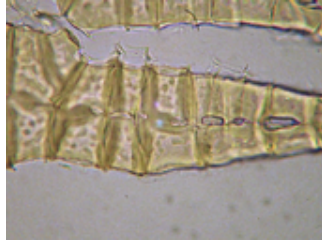


## Report for *Lewinskya holzingeri*

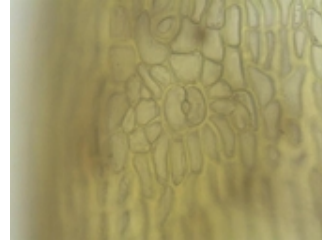
### TAXON DETAILS



© 2021 Scot Loring



© 2021 Scot Loring



©2013 calbryos group

### Classification

Scientific Name	<i>Lewinskya holzingeri</i> (Renauld & Cardot) F. Lara, Garilleti & Goffinet
Common Name	Holzinger's bristle moss
Family	Orthotrichaceae
Element Code	NBMUS560E0
USDA Plants Symbol	
Synonyms/Other Names	<u><i>Orthotrichum holzingeri</i></u>

### Conservation Status

California Rare Plant Rank	1B.3
Global Rank	G3G4
State Rank	S2
CESA	None
FESA	None
Other Status	
CRPR Changes	added to 1B.3 on 2014-06-03
Date Added	2014-06-03
Last Update	2023-09-05

### Ecology and Life History

Lifeform	moss
Blooming Period	
Elevation m (ft)	715-1800 (2345-5905)
General Habitats	Cismontane woodland, Lower montane coniferous forest, Pinyon and juniper woodland, Upper montane coniferous forest
Microhabitat Details	Usually on rock in and along streams, rarely on tree limbs
Microhabitat	

## Threat List Data from the CNDDDB

Threat List Total:		0
	Total EOs	Percent EOs
EOs with Threats Listed	0	%
Threat List:		

## Element Occurrence Data from the CNDDDB

Total Element Occurrences:	7
Element Occurrence Ranks:	
Excellent (A)	0
Good (B)	0
Fair (C)	0
Poor (D)	0
None (X)	0
Unknown (U)	7
Occurrence Status	
Historical, > 20 years	4
Recent, < 20 years	3
Presence	
Presumed Extant	7
Possibly Extirpated	0
Presumed Extirpated	0

## Location

California Endemic	No
--------------------	----

### Counties

Amador (AMA), Calaveras (CAL), Modoc (MOD), Siskiyou (SIS), Tulare (TUL), Tuolumne (TUO)

### States

California (CA), Idaho (ID), Oregon (OR), Washington (WA), Wyoming (WY)

### Quads

Ackerson Mtn. (3711977), Bear River Reservoir (3812052), Calaveras Dome (3812042), Giant Forest (3611857), Iron Gate Reservoir (4112284), Lake McCloud (4112221), Pothole Valley (4112078), Scott Mountain (4112236)

### **Notes**

Definitions of codes preceding a county and/or quad:

\* Presumed extirpated

(\*) Possibly extirpated

Species may be present in other areas where conditions are favorable. These data should NOT be substituted for pre-project review or for on-site surveys.

## Notes

California plants previously identified as *Orthotrichum holzingeri* are now placed in the genus *Lewinskya*. Similar to *L. laevigata*.

### **Threats**

Possibly threatened by recreational activities, trail and road construction, and hydrological alterations.

### **Taxononmy**

Possibly threatened by recreational activities, trail and road construction, and hydrological alterations.

### **Selected References**

**CNPS Status Review:** Proposed Addition to CRPR 1B.3, G3 / S2 (2014)

**CNPS Status Review:** Proposed Non-Substantive Name Change (2023)

**Original Description:** *Contributions from the United States National Herbarium* 3(4):270 (1895)

**Revised Nomenclature:** *Cryptogamie, Bryologie* 37(4): 361–382 (2016)

### **Suggested Citation**

California Native Plant Society, Rare Plant Program. 2024. Rare Plant Inventory (online edition, v9.5). Website <https://www.rareplants.cnps.org> [accessed 3 May 2024].